



LOGGERHEAD
MARINELIFE CENTER



2024 IMPACT REPORT

TABLE OF CONTENTS

CEO Message.....	2
Hospital	4
Renovations	6
Research.....	8
Conservation	10
Education.....	12
Philanthropy	14
In Memoriam	15
Accolades	16
The Eleanor	17
Retail	18
Blue Friends Society.....	19
TurtleFest.....	20
Financial Summary	22
How to Help	24
Board of Directors/Staff.....	26
Volunteer List	28
Gordon Gray Circle List	32
Donor List.....	34
Partnerships/Collaborations	40

*Cover photos courtesy of Deano Cook,
LMC Artist in Residence*

MISSION

To promote conservation of ocean ecosystems
with a special focus on threatened and
endangered sea turtles.

VISION

To be a leading authority locally and internationally
in ocean conservation via sea turtle research,
rehabilitation, and educational programs.



“

In 2024, our exceptional team achieved important milestones toward our mission, completed campus improvements, and strengthened our financial position. We have big plans for the year ahead. We thank our generous donors and partners who inspire us and help make these successes possible.

– Monique Brechter,
LMC Board Chair

FRIENDS AND SUPPORTERS OF LOGGERHEAD MARINELIFE CENTER,

In 2024, I had one of the most amazing wildlife experiences of my life on a beach not far from Loggerhead Marinelifelife Center (LMC). To put that in context, I have had a lifetime of incredible animal encounters that include diving with 16-foot tiger sharks, watching coral spawning, camping in Alaska surrounded by brown bears, and photographing bull moose in Colorado. Last summer, I spent a night with a leatherback sea turtle named Emerald.

Leatherbacks are the first of the three species to arrive to nest on the 9.5 miles of beach we monitor each year. Our team conducts critical research to better understand these vulnerable creatures, all protected under the Endangered Species Act. I had never encountered a leatherback in the water or on a nesting beach. Our research team called me at 3 a.m. to tell me to meet them at the Seminole Golf Course beach where Emerald, a leatherback

weighing 1,000 pounds, was making a nest and ready to lay her eggs. She was a “remigrant” (repeat nester) who was originally tagged in 2011 by LMC researchers in southern Juno Beach. The team is always excited when these remigrants come back for a visit.

I got to observe our talented researchers draw blood, take measurements, and assess Emerald in her nesting “trance.” Our team resembles a Formula 1 pit crew working with precision and speed, as the process of dropping the eggs only lasts about 10 minutes. Upon completing their work, the team allowed me to stay on the beach, albeit a safe distance away, to observe this majestic creature. For more than an hour, I watched her finish covering her nest and then traverse the beach back to the ocean. Throughout the process, she grunted and roared like a dinosaur, fitting for a species that has been around for over 100 million years!



Dr. Justin Perrault takes measurements on a nesting leatherback.



On that starlit night, I was awestruck by the sheer beauty of what I had witnessed. The experience elevated my passion for LMC, an organization I already loved, to a whole new level.

Sea turtles are an indicator species, meaning that they tell us about the health of the environment. Through our work with sea turtle patients and nesting turtles, we see the impacts of pollution, poor water quality, human interference, and climate change – every single day. Sea turtles play a critical role in the marine environment as both predators and prey. Their nesting activities are also important for beach and dune health. While some sea turtle populations have increased, many others around the world are decreasing. Our role in protecting, rehabilitating, and returning them to the ocean has never been more important. We could not do this work without you, our generous donors, sponsors, and partners.

For more than 40 years, you have supported our work in sea turtle rehabilitation, research, ocean conservation, and education. Your support ensures that the Center remains a free-access facility so that all guests can have meaningful encounters with the sea turtles we work so hard to protect and learn about the marine ecosystems they depend on.

Thank you for your belief in our mission.

Please enjoy this Impact Report. It recaps what you've helped us accomplish in 2024. I welcome your comments and questions.

With sincere appreciation,

Andy Dehart,
President & CEO



IN 2024, LOGGERHEAD MARINELIFE CENTER TREATED MORE THAN 200 SICK OR INJURED JUVENILE AND ADULT SEA TURTLES.

The hospital team also gave critical veterinary care to over 1,000 hatchlings and “washbacks” from storms, who don’t make it out to sea due to illness or injury.

Certain turtle patients stand out for their resilience in overcoming injuries, unique behaviors, or distinctive patterns on their shells. Scout was one of those patients. This adult male loggerhead was admitted April 27, 2024, severely injured by a boat strike. He was rescued in Port St. Lucie, Florida by Inwater Research Group, a valued partner and 2024 Go Blue Nonprofit of the Year.

Scout’s condition was critical. He presented with a deflated lung and significant shell fracture. The protective membrane lining his body cavity and supporting his internal organs had detached, allowing environmental debris to press against his lung. He required immediate intervention.

Scout’s treatment protocol involved several crucial steps. The hospital team used a wound vacuum to help reattach the internal protective membrane to his shell, allowing the lung to reinflate. He received titanium orthopedic implants, including bone plates, screws, and wires. The team also applied zip ties to help stabilize the fractured shell, showing how everyday items can play a vital role in the rehabilitation process. Scout received ongoing wound care, antibiotics, and nutritional support. Finally, X-rays and CT showed Scout was healed and ready to return to the ocean.

Releasing healthy turtles back into the ocean to reproduce is a key goal of our work. Our Juno Beach sea turtle releases are popular, life-affirming events that allow the public to witness the return of these majestic creatures to their “ocean home.” Guests gain a better understanding of our role in saving these species. On July 18, 2024, less than three

months after admission to our hospital, Scout was released on Juno Beach to a cheering crowd. Scout’s fast recovery provided our research team with a unique opportunity to understand data from a male loggerhead.

While LMC has collected 40 years of data on female sea turtles as they nest, we know less about males. Scout was fitted with a satellite tracker to learn where he spends his time during and post-nesting season. By late 2024, Scout returned to the Ft. Pierce Inlet where he has been observed moving between the ocean and the Intracoastal Waterway. He appears healthy, having benefited from a second chance our veterinary team provided.

Scout’s story is just one of many made possible by LMC’s veterinary, animal care, and research teams. Above all else we prioritize the well-being of the animals under our care and the turtles we research.



“

LMC is becoming a global hub for future aquatic veterinarians to gain this specialized knowledge.

– Dr. Heather Barron,
Chief Science Officer

DR. BARRON
CHIEF SCIENCE OFFICER

Marisa Marulli

“

Minimally invasive advanced imaging techniques allow us to provide the highest standard of patient care.

– Amy Kowalski, CVT
Hospital Manager



GENEROUS DONORS HELPED EXPAND LOGGERHEAD MARINELIFE CENTER'S HOSPITAL AND RESEARCH FACILITIES.

In 2024 we saw the culmination of Phase Two of our campus expansion. The **Gordon & Patricia Gray Family Hospital** and the **George & Lynn Bovenizer Research Laboratory** were both fully renovated and improved. These initial capital investments, including the **Lucy, Friend of the Sea Imaging & Diagnostic Suite**, were bolstered by a generous donation from **Natasha and Dirk Ziff**. Funding from **The Glenn W. Bailey Foundation** also enabled the acquisition of a computed tomography (CT) machine, significantly enhancing our team's diagnostic capabilities as the only stand-alone sea turtle hospital with this technology.

The hospital's surgical area and imaging suite was expanded to create more functional spaces. We added an intensive care unit; a warm, humid space that is essential for hatchlings and critical care

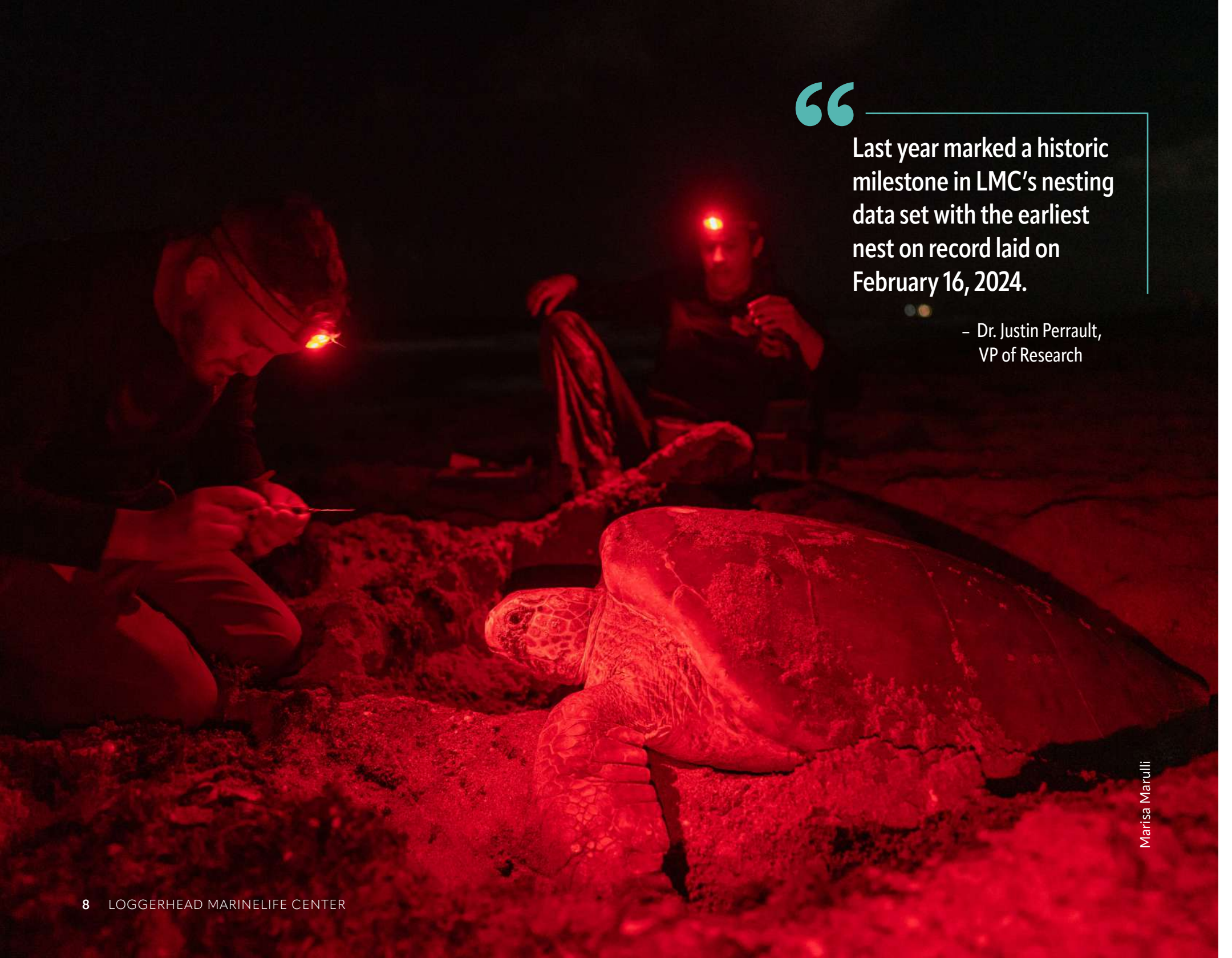
patients who cannot initially be immersed in water. The expanded hospital offers space to train the next generation of aquatic veterinary staff, allowing greater engagement with interns and externs. Because sea turtle surgery is rarely taught in veterinary programs, under the leadership of Chief Science Officer, Dr. Heather Barron, LMC is becoming a global hub for future veterinarians to gain this specialized knowledge.

The renovation also added a state-of-the-art water quality laboratory, a necropsy facility, and an animal food preparation area with a walk-in freezer. These renovations make our campus more prepared than ever to fulfill our mission. On behalf of our staff, board, and 400+ volunteers, thank you to the generous donors listed above for their strategic support that made these game-changing renovations possible.



2024 Rehabilitation Impact

- Treated **212** juvenile and adult patients
- Treated **1,027** hatchlings & washbacks
- Achieved a **73.5%** patient survival rate
- Hosted **24** veterinary medical student externs
- Hosted **seven** undergraduate interns
- Co-authored **six** journal publications
- Authored **one** book chapter



“

Last year marked a historic milestone in LMC’s nesting data set with the earliest nest on record laid on February 16, 2024.

– Dr. Justin Perrault,
VP of Research

Marisa Marulli

A NEW RESEARCH LABORATORY ALLOWS GUESTS TO WATCH SCIENCE IN ACTION.

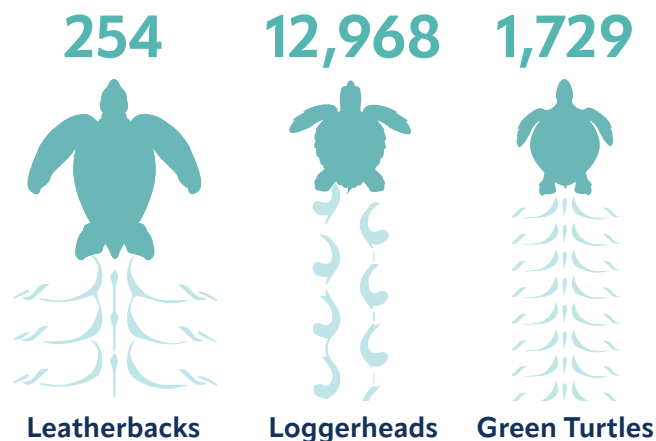
The research team, led by VP of Research, Dr. Justin Perrault, celebrated its ninth-highest nesting season on record with 14,951 total nests on the 9.5 miles of beach LMC monitors annually. Last year marked a historic milestone in LMC's nesting data with the earliest nest on record laid by a leatherback on February 16, 2024. The last nest of the season was laid by a green turtle on October 4, 2024.

The research laboratory was reconfigured to accommodate the growing amount of work conducted during nesting season. The experimental benchtops now face windows overlooking the campus so guests can observe science in action.

The research staff also conducts extensive tagging work to better understand movements of sea turtles beyond mating season. The team had a memorable encounter with Bootes, a leatherback first tagged by LMC in 2002. She returned in

2024 weighing 1,000 pounds, laying at least 11 nests. This is a hopeful sign for this endangered species.

Another leatherback, Shirleen, continues to transmit data from a satellite tag placed on April 18, 2023. Shirleen set a record for LMC's longest satellite tag duration for any sea turtle. Her deepest dive during this time was to 3,753 feet! These data are shared with the global research community studying sea turtle movement patterns. The research team published five scientific manuscripts in 2024.



2024 total nests by species.

2024 Research Nesting Season Data

- **14,951** nests monitored (9th highest on record)
- **254** leatherback nests monitored (7th highest on record)
- **12,968** loggerhead nests monitored (6th highest on record)
- **1,729** green turtle nests monitored (11th highest on record)
- **45,690** total crawls monitored
- **257 days** of surveys conducted
- Estimated **1.4 million** eggs laid, producing roughly **650,000** hatchlings
- Weighed and evaluated eight leatherbacks ranging from **751–995 lbs**
- Weighed and evaluated 12 loggerheads ranging from **114–323 lbs**



“

LMC’s Responsible Pier Initiative includes “turtle-safe” angling practices and underwater pier cleanups to remove and recycle marine debris.

– Joanna Walczak,
VP of Conservation

Marisa Marulli

CONSERVATION TEAM SUSTAINS OUR SUCCESSES AND CHARTS NEW COURSE.

Many of the turtles treated in Loggerhead Marinelife Center's hospital show signs of having ingested plastic. Some come entangled in fishing gear or other marine debris. Their injuries shed light on the challenges facing our oceans. Conservation and education, two of our four core mission pillars, are essential in driving positive change in marine ecosystems.

Our conservation programs address human-induced threats to sea turtles. One program, the Responsible Pier Initiative (RPI), collaborates with recreational anglers to provide first responders on fishing piers with the necessary resources to handle sea turtle injuries and strandings on or around fishing piers. To date, 74 piers have joined RPI; 1,034 turtles have been rescued.

Another key conservation program helps prevent boat-strike incidents. Studies show that reducing speed and wearing polarized sunglasses reduce injuries to turtles. Acting

on these data, LMC's Sea Turtle Protection Zone (STPZ) promotes "turtle-safe" boating in Palm Beach County. STPZ encourages boaters to remain vigilant, particularly during nesting season when turtles are often at the surface between the shore and Florida's Coral Reef, a hub for fishing and diving.

LMC's conservation team continues to provide opportunities for area residents to remove marine debris. Beach cleanups are held every Saturday throughout the year in partnership with LMC's Blue Friends Society and generous local sponsors. Thanks to more than 5,300 volunteers, 135 beach cleanups were held in 2024. Over 5,100 pounds of trash were removed, consisting mostly of plastic waste.

In July, we welcomed Joanna Walczak, our new VP of Conservation. During her tenure with the Florida Department of Environmental Protection, she worked

on habitat restoration and water quality initiatives. She is currently evaluating opportunities in Palm Beach County and the state of Florida for conservation projects that LMC could either lead or join in 2025 to ensure a powerful, positive impact. Under Joanna's leadership, we're confident our conservation team will continue to grow its powerful and positive impact in 2025.

2024 Conservation Impact at Juno Beach

- **162** miles of monofilament fishing line removed from the Juno Beach Pier through the RPI; enough to wrap around the pier **864** times
- **5,300** volunteers removed **2.5** tons of trash from the beach
- **84** percent of all marine debris collected was plastic
- **267** bags of construction polystyrene were removed by **164** community members following Hurricane Milton

EDUCATION IS IN THE DNA OF LMC.

Founder Eleanor Fletcher's success in sea turtle advocacy began with teaching area residents about sea turtles and their importance in marine ecosystems. By educating locals, tourists, and policymakers, she helped change attitudes and laws, leading to protections.

Today, education programming at LMC is active, collaborative, and hands-on. It inspires curiosity and guides students to a new understanding of their role in protecting ocean life and South Florida's marine ecosystems. Since Mrs. Fletcher opened the Center more than four decades ago, LMC has been a free-access facility and is proud to remain so, ensuring that no one is ever denied the opportunity to learn due to financial hardship.

In 2024, LMC touched the hearts and minds of 75,551 learners. Our education team, led by VP of Education, Hannah Campbell, is most proud of Oceans of Opportunity. This initiative brings thousands of Palm Beach County students into LMC's sea turtle

hospital, learning labs, and classrooms for lessons focused on protecting sea turtles and ocean conservation.

More than 9,000 children with limited access to coastal experiences benefitted from LMC's rich educational programs. Thanks to our generous donors many received Oceans of Opportunity scholarships to attend LMC's Junior Marine Biologist summer camp for ocean-inspired adventures in a safe, fun environment.

In partnership with the School District of Palm Beach County, 3,100 seventh-grade students took part in field trips designed to deepen their ocean literacy through the inspiring stories of LMC's recovering sea turtle patients. LMC's lessons aren't just about marine science; they demonstrate the need for collective conservation action. Students learn how their individual behaviors can make a real difference in protecting the ocean's fragile ecosystems.

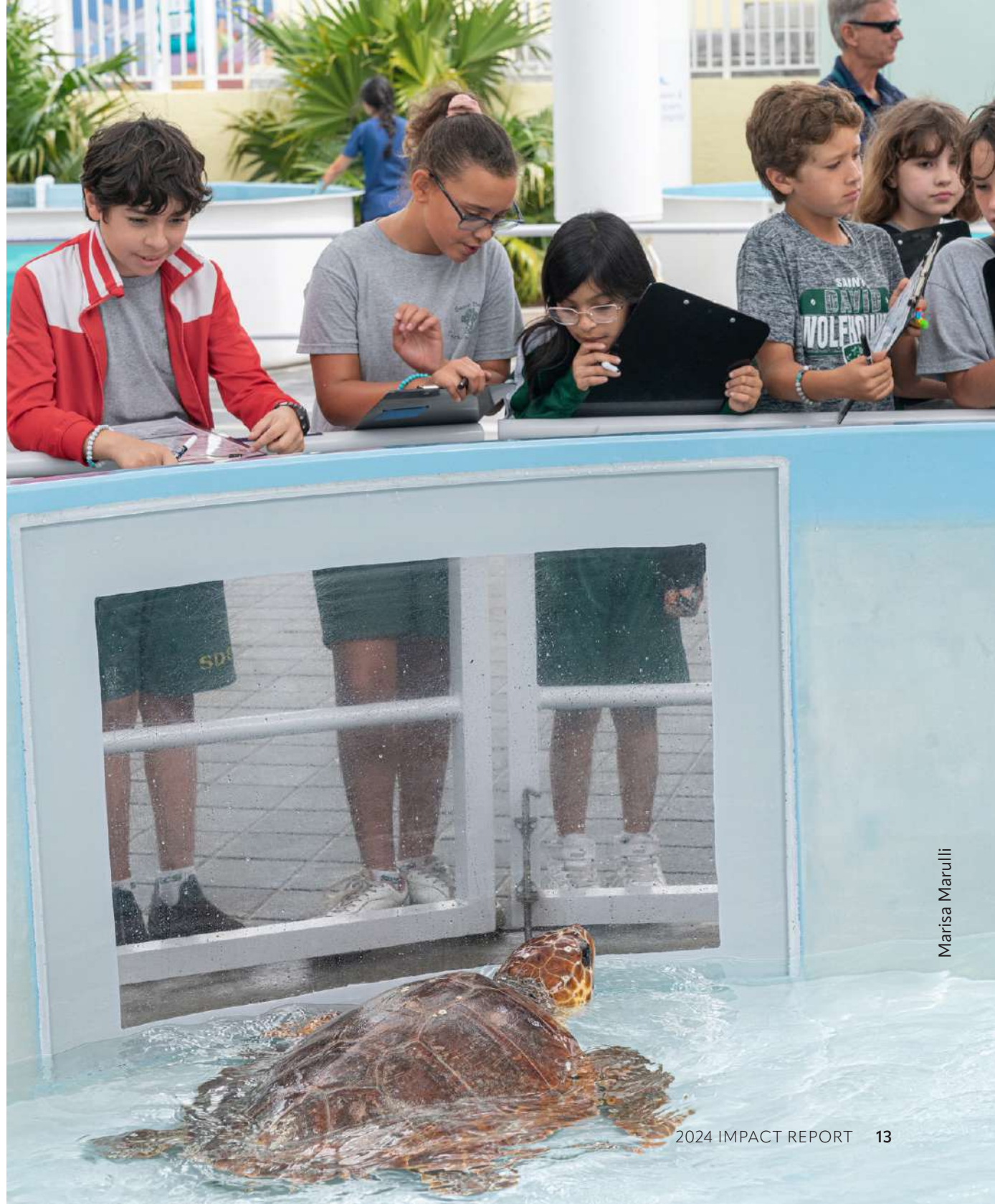
Our education programs extend deep into our community. In 2024, the Center reached

more than 16,100 community members through special events, including the South Florida Fair and Tortuga Music Festival. Our new Education & Outreach vehicle, made possible by **Admirals Cove Foundation**, brings resources – along with a conservation message – to communities across the county. LMC's after school program team provided a six-week curriculum, Diving Into Ocean Connections, to 3,900 students in under-resourced communities. This summer, our Ocean Connections bus, sponsored by **Florida Power & Light Company**, took campers on field trips to explore local coastal ecosystems with LMC's teaching scientists.

Our education programming is designed to build ocean literacy, foster empathy, and empower students to become responsible stewards of the ocean and marine life. These transformative educational experiences nurture a new generation of citizens who understand the importance of ocean conservation. The goal is to ensure a healthier planet for generations to come.

2024 LMC Education Impact

- Engaged **75,551** learners in a rich range of programming
- Provided **9,717** scholarships through Oceans of Opportunity
- Welcomed **2,042** Title I school students to experience field trips at LMC
- Taught **3,900** lessons through LMC's six-week after-school curriculum, Diving Into Ocean Connections
- Engaged **3,100** seventh-grade students in the School District of Palm Beach County Community Experience initiative, funded in part by the Cultural Council for Palm Beach County
- Safely observed **31** nesting sea turtles during the Guided Turtle Walk Program



Marisa Marulli

SUSTAINED SUPPORT FROM GENEROUS DONORS, GOVERNMENT, AND CORPORATE PARTNERS MAKES OUR WORK POSSIBLE.

We are proud to be woven into the civic and philanthropic fabric of the Palm Beach County community. The Loggerhead Marinelife Center's staff, board, and volunteers are grateful to the generations of supporters who believe in our work. Our mission includes being stewards of your generosity, ensuring that you see the results of your investment in our work.

Thanks to an extraordinary investment in programmatic and capital improvements, LMC became a stronger organization with an even greater reach in 2024. We welcomed a record 330,000 guests to the Center and 112,000 to the Juno Beach Pier. We strive to leave a lasting impression on our guests as they experience our work in rehabilitation, research, conservation, and education. Guests donated an impressive \$1.2 million at our newly renovated **Mary Alice Fortin Foundation Welcome Center**, helping us meet our \$10 million budget.

Generous personal and foundation giving made up 50% of LMC's total revenue. The **Gordon Gray Circle**, encompasses our most dedicated supporters, founded in 2012 by the late Gordon Gray. The Circle is comprised of 278 individuals and foundations that donate \$5,000 or more annually to support our general operations. No group does more to support our critical work than the Circle. This year, \$1,576,517 was raised through this generous and special community.

We could not operate without the critical collaboration of local government partners. For 40 years, we have operated in Loggerhead Park, managed by **Palm Beach County Parks and Recreation**, with whom we operate the county's Juno Beach Pier. The **City of Juno Beach** provides vital operational support, especially during our public sea turtle releases. We collect data for **Palm Beach County Environmental Resources Management** on beach

renourishment projects. County agencies such as the **Cultural Council for Palm Beach County**, **Tourist Development Council**, and **Discover The Palm Beaches** work synergistically to position us as a top-rated attraction in Palm Beach County.

We are fortunate that corporations and local businesses believe in our work and are proud to align with our values and brand. **Amazon, Bank of America, Carrier, Florida Power & Light Company, Key Private Bank, Marine Industries Association of Palm Beach County, Northern Trust**, and **TBC Corporation** generously support our mission.

To everyone who donated to LMC in 2024, we thank you. Whether it was a small cash donation in the Welcome Center or a major gift for a new exhibit, your support was invaluable.

A TRIBUTE TO GORDON AND PATRICIA GRAY



This year, Loggerhead Marinelife Center lost two beloved supporters, Gordon and Patricia Gray. Gordon, a longtime LMC Board member, launched the Circle of 50 in 2012. His goal was encouraging like-minded philanthropists interested in protecting sea turtles and advancing ocean conservation to support the Center annually with unrestricted gifts. Through Gordon and Patricia's advocacy, the Circle of 50 grew and was key to launching and sustaining the capital improvements during the last four years. The Circle was renamed the Gordon Gray Circle in 2022 in Gordon's honor.

The campus enjoys magnificent spaces thanks to Gordon and Patricia's vision and generosity, including the **Gordon & Patricia Gray Auditorium**, and the **Gordon & Patricia Gray Family Hospital**. The Center is thankful that the Gray legacy continues, as daughter, Diane Gray, serves on the LMC Board and grandson, Gray Welton, serves on the Blue Friends Society Steering Committee.

All of us who knew Gordon and Pat, join in celebrating their long and impactful lives, and the many contributions they made to our cause and other wildlife-protection organizations across the globe.

THE CENTER RECEIVED TWO SIGNIFICANT HONORS IN 2024.



experts for the Readers' Choice Awards and the public votes for their favorites. LMC surpassed iconic locations such as the Golden Gate Bridge, Central Park, and the Great Smoky Mountains National Park.

The magic of LMC lies in the face-to-face encounters guests have with sea turtle patients and aquarium residents. These experiences are enriched by inspiring conversations with our volunteer interpreters and passionate animal care staff.



For more than 40 years, Loggerhead Marinelife Center has been a donation-based facility.

In 2024 we were recognized as the **Best Free Attraction in the United States** by **USA Today's 10Best Readers' Choice** poll. Nominees are submitted to a panel of

LMC won the **Large Nonprofit of the Year** award from Nonprofits First at the 8th Annual Hats Off Awards.

Established in 2005 by public and private funders in Palm Beach County, Nonprofits First strengthens community causes by empowering organizations to achieve their missions through exceptional performance and results. With such strong contenders, we were greatly honored to receive this award.



We welcomed a record 330,000 guests to the Center and 112,000 to Juno Beach Pier in 2024.

- Andy Dehart
President & CEO

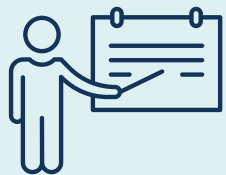
THE ELEANOR, OUR EVENT SPACE, ACHIEVED A 92 PERCENT BOOKING RATE.

Our unique business model of generous community philanthropy, grants, program income, event rental, and gift store sales allow us to sustain our free-access policy.

In 2024, we branded our elegant event space as The Eleanor at Loggerhead Marinelife Center. This 5,000-square-foot venue, complemented by the Ocean View Skydeck and the Gordon and Patricia Gray Auditorium, offers a stunning location to host weddings, corporate events, mitzvahs, celebrations of life, and other special events while supporting a great cause. We booked

45 events, hosted nearly 5,000 guests, and achieved a 92 percent booking rate. With more than \$250,000 in event revenue, these 2024 bookings prove that there is a market for individuals and groups wanting to celebrate with a cause.

Additionally, we offer education programming such as the By the Sea Lecture Series, Guided Turtle Walks, Hatchling Releases, and Custom Tours provide engaging opportunities to learn about sea turtles and marine ecosystems directly from our experienced staff.



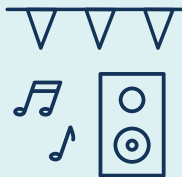
16

Corporate Events



12

Nonprofit Events



10

Special Events



7

Weddings



Rosina DiBello Photography Studio

LOGGERHEAD MARINELIFE CENTER'S POPULAR RETAIL LOCATIONS GROSSED \$4.1 MILLION IN SALES IN 2024.



A visit to LMC is not complete without a stop at the boutique Gift Store. Recognized locally for fair prices and delightful collections of marine-themed clothing, jewelry, and house décor, the store is essential to the financial success of the Center. Unlike gift stores at many attractions, LMC's store consistently offers unique, often sustainable and locally sourced items. Kate Fratalia, VP of Retail, hosted numerous pop-ups featuring local photographers, authors, jewelers, and other artisans.

The store generated nearly \$2.9 million in gross sales; income that helps the Center sustain its donation-based policy. Whether a guest buys an oil painting by artist-in-residence, **Deano Cook**, or a t-shirt from True Floridian, each purchase directly supports our work – from the care of our sea turtle patients and tank maintenance to scholarships for future marine scientists.

LMC manages the retail store for **Manatee Lagoon: an FPL Eco-Discovery Center** and the **Juno Beach Pier**, owned by Palm Beach County, generating \$4.1 million in gross retail sales across the three locations. LMC also operates the pier and provides knowledgeable staff to interpret this iconic landmark. The pier provided fishing and visitor access to 112,000 visitors in 2024.

BLUE FRIENDS SOCIETY MEMBERS BUILD COMMUNITY WHILE PROMOTING ENVIRONMENTAL STEWARDSHIP.

LMC's Blue Friends Society, founded by **Lynne and Pete Wells** in 2009, is a dynamic networking group of ocean conservation enthusiasts who support the Center's significant work and promote its mission. From weekly beach cleanups to nesting season and Summer Solstice celebrations, Blue Friends do good work and have fun for a critically important cause.

Joining the Blue Friends Society is often a first step in deeper engagement with the Center. In 2024, the Blue Friends Society held events on campus and in the community, proudly sponsored by **Key Private Bank**. An energetic steering committee hosted a memorable mixer that introduced newcomers to Palm Beach County to the Center.

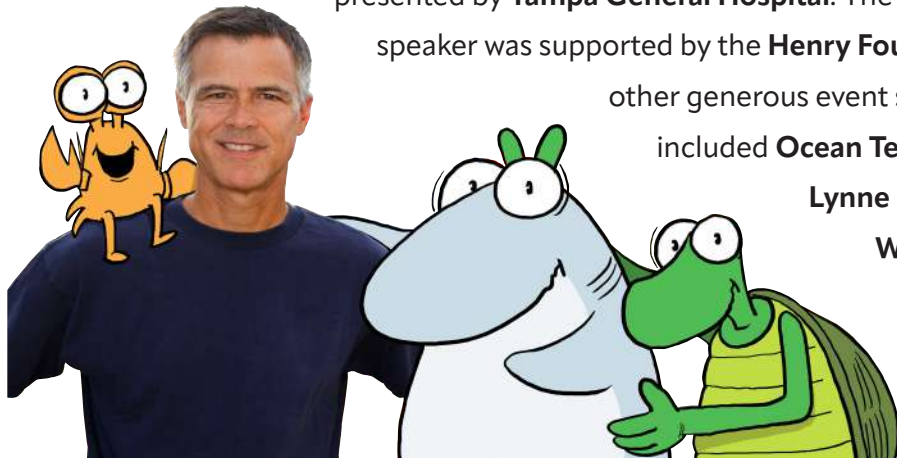
The highlight of the Blue Friends Society calendar is the Go Blue Awards, recognizing those making extraordinary contributions in ocean conservation. In 2024, the Go Blue Awards dinner was presented by **Tampa General Hospital**. The keynote speaker was supported by the **Henry Foundation**;

other generous event sponsors included **Ocean Tec, AMG, Lynne and Pete Wells, and Denise Kalland.**



(L to R) Meg Miller, Alyse Lemstrom, Nicole Plummer.

Cartoonist **Jim Toomey**, (at left) recipient of the **Eleanor Fletcher Lifetime Achievement Award** was keynote speaker. He inspired the audience with his dedication to marine conservation and shared engaging stories about his syndicated cartoon strip Sherman's Lagoon.



10,000 GUESTS CELEBRATE THE START OF NESTING SEASON AT OUR ANNUAL TURTLEFEST COMMUNITY EVENT.

In February, Loggerhead Marinelife Center hosted its largest-ever, annual TurtleFest. Presented by **Amazon**, this beloved, family-friendly seaside celebration kicked off sea turtle nesting season, welcoming more than 10,000 guests to the Center.

This fun, free event, held annually since 2005, gives back to a supportive community. In 2024, it featured artisan merchants, food stations, kids' activities, and interactive opportunities to learn about ocean conservation. Guests enjoyed live music from stellar bands

performing on the **Marine Industries Association of Palm Beach County's** main stage. Other generous sponsors included **TBC Corporation** (transportation), **Florida Power & Light** (education), **Palm Beach Marriott Singer Island Beach Resort & Spa** (bike valet), and **Loggerhead Marinas** (hydration station). Adults enjoyed the lounge atmosphere of the **Sailfish Brewing Company** and **Vida Caña Rum's** Sky Deck Bar. Overall, TurtleFest 2024 was such a success that the decision was made to expand to a two-day event in 2025.



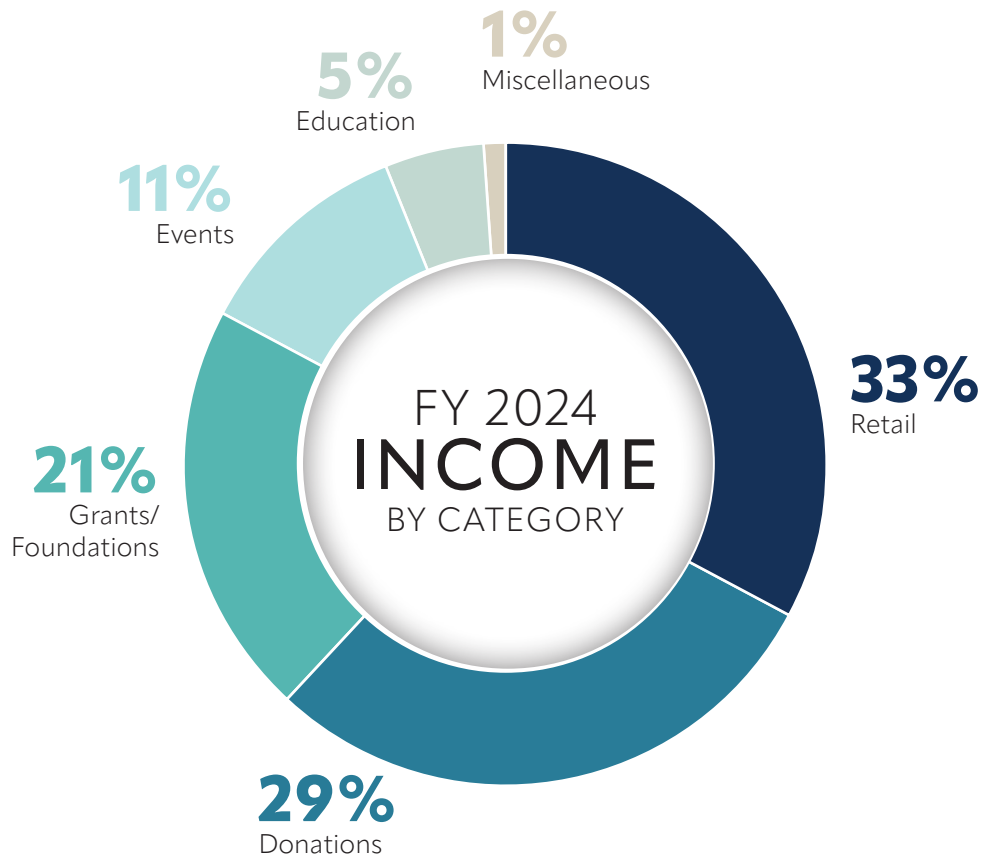


FINANCIAL SECURITY

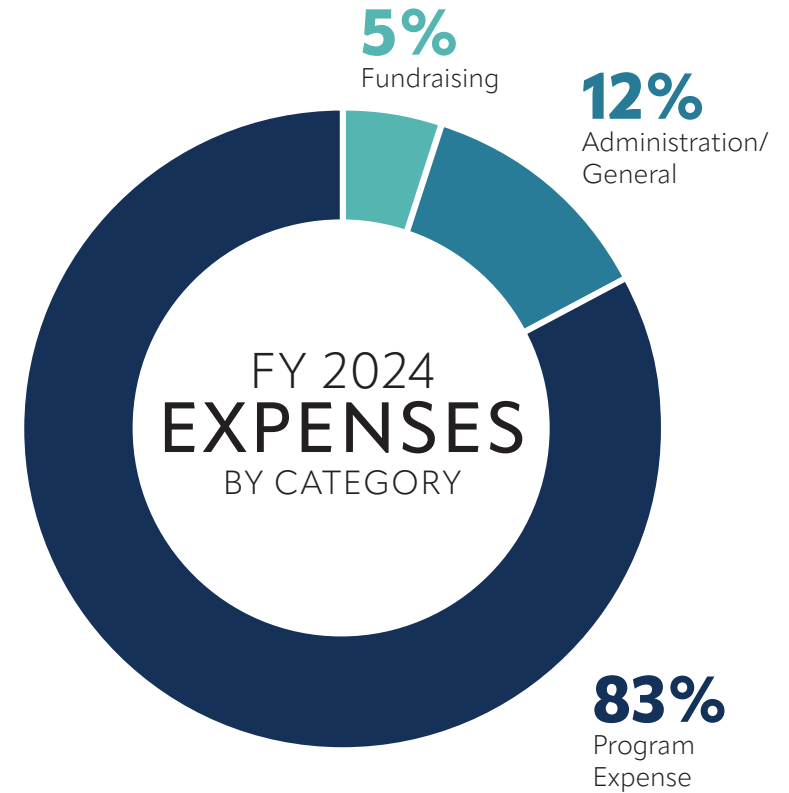
Loggerhead Marineline Center has prioritized financial stewardship. Sound management of our financial resources under the watch of CFO Kelley Scott has allowed us to utilize the generous support of our community to improve our operations and grow the organization. 2024 saw the addition of new accounting software for better budgeting and financial controls.



Loggerhead Marineline Center is a 501(c)(3) nonprofit organization committed to the conservation of ocean ecosystems through public education, research, and rehabilitation with a focus on threatened and endangered sea turtles.



■ 33% Retail.....	\$4,092,641
■ 29% Donations.....	\$3,702,218
■ 21% Grants/Foundations.....	\$2,689,790
■ 11% Events.....	\$1,386,612
■ 5% Education.....	\$681,003
■ 1% Miscellaneous.....	\$24,450
TOTAL INCOME.....	\$12,576,714



■ 83% Program Expense	\$10,312,362
■ 12% Administration/General.....	\$1,490,944
■ 5% Fundraising	\$621,226
TOTAL EXPENSES.....	\$12,424,532

Above figures based on unaudited financial statements.

YOU MAKE A DIFFERENCE.

Help us keep our Center donation-based so that no one is ever denied access to a marine education. Our work is made possible by your generosity.

Give With Confidence

In 2024, LMC received Candid's **GuideStar Platinum Transparency Ranking**. We continue to receive **Four Stars**, the highest rank from **Charity Navigator**. We are also a proud member of the 1% for the Planet community. We are committed to the responsible management of your investment and are proud that LMC ranks among the most effective, top 6% of charities in the nation.



Give Through Your Donor-Advised Fund

Donor-advised funds (DAFs) have become one of the most popular methods for charitable giving in the United States, favored for their ease of use, flexibility, and tax advantages. By directing a gift to LMC through your DAF, you can make a significant contribution toward our mission.

Make a Gift with a Charitable IRA Rollover

For our donors aged 73 and older with IRAs, there's an important aspect of tax law to be aware of: the Required Minimum Distribution (RMD). The RMD is the minimum amount you must withdraw from your IRA annually, starting at age 73. If you don't need the distribution for personal use, you can make a direct transfer of your RMD (or a portion of it) to our organization. This is known as a Qualified Charitable Distribution (QCD). By doing so, you can

satisfy your RMD requirement, avoid taxes on the transferred amount, and support our mission all at once. This is a tax-efficient way to give, ensuring that **100% of your donation** goes directly to our cause.

Gift of Stock

Giving in the form of appreciated securities is easy — and you may receive an immediate tax deduction and savings on capital gains taxes. Contact us to transfer stock directly to LMC.

Become a Member

Joining LMC as a member plays a crucial role in advancing our mission. Your membership helps fund vital rehabilitation efforts, research, and educational programs that directly impact the health of marine ecosystems. Join this community dedicated to making a significant difference in ocean conservation today. marinelife.org/become-a-member/

Corporate Sponsorships

Becoming a corporate sponsor of LMC offers companies a unique opportunity to align their brand with ocean conservation. As a globally recognized leader in our pillars of rehabilitation, research, education, and conservation, LMC provides sponsors with meaningful visibility, community engagement, and customized marketing benefits. By supporting LMC, companies demonstrate their commitment to environmental stewardship, connect with a passionate audience, and contribute to our mission.

Honorary & Memorial Gifts

Celebrate the memory of a loved one or honor someone special by contributing to our cause. These gifts not only support our work, but also help establish a legacy of hope and conservation. By choosing to give in this meaningful way, you can be assured that you will be reminded of your impact every time you set foot on our campus. marinelife.org/pavers-benches-auditorium-seats/

Online Giving

Every contribution counts, no matter the size. Our recurring donors offer a steady stream of unrestricted support, enabling us to plan effectively for the future of the Center, and the overall well-being of sea turtles.



Your philanthropy helps us keep the Center donation-based and accessible to all while furthering our mission centered on sea turtle research, rehabilitation, education, and conservation.

For the many ways you can support our mission, get in touch with Gui Proença, Director of Development at 561-627-8280, ext. 133, or email gproenca@marinelife.org.



Marisa Marulli

Monique Brechter, LMC Board Chair and
Andy Dehart, LMC President & CEO.



BOARD OF DIRECTORS

OFFICERS

Monique Brechter, *Chair*
Karen Marcus, *Vice Chair*
Beau Standish, CFA, *Treasurer*
Diane Gray, *Secretary*

MEMBERS

Susan Burke
Camille Coley, EdD, JD, CRA
Sally Gates
Joseph A. Gibbons
Raymond E. Graziotto
Thomas Kodadek, Ph.D.
Matt Kuntz
Leanna Landsmann
Bart F. Livolsi
Maureen Lloyd
Ed Lunsford
Katharine Sinclair MacGregor
James F. Mullen IV, CPA
Jodi Oh
Pam Rauch
James A. Reiffel, M.D.
Crista Ryan
M.J. Saunders, Ph.D.
Erica Scherzer
Brian K. Waxman
Lynne Wells
Jeanette Wyneken, Ph.D.
Natasha Ziff

EMERITUS MEMBERS

Nancy DiMarco, DVM
Gordon Gray**
Frank W. Harris**
Dawn Hoffman
Ann Miller**
Morris G. "Skip" Miller, Esq.
Gail Nelson
Emmy S. Rayne**

**Deceased

ADMINISTRATION

Andy Dehart, *President & CEO*
Xavier Cortesano, *COO*
Kelley Scott, *CFO*
Katie Herr, *Director of Human Resources*
Stevi Kosloskey, *Exec. Office Administrator*
Bob Lamina, *Staff Accountant*
Hope Wilkos, *Finance Associate*

ANIMAL HUSBANDRY

Michael Burton, *Director of Facilities and Life Support*
Erin Maroon, *Husbandry Manager/DSO*
Coral Rhodes, *Aquarist/ADSO*
Cat Cowan, *Aquarist*
Sierra Miller, *Aquarist*
Lauren Smith, *Aquarist*

CONSERVATION

Joanna Walczak, *Vice President of Conservation*
Meghan Boone, *Threat Reduction Coordinator*
Valerie Nicole Tovar, *Conservation Manager*

DEVELOPMENT

Gui Proença, *Director of Development*
Dana Johnson, *Annual Fund Manager*
Jenna Jones, *Individual Giving Manager*
Emma Troup, *Development Associate*

EDUCATION

Hannah Campbell, *Vice President of Education*

Mackenzie Comp, *Marine Education Specialist*
Megan Harris, *Director of Education*
Andrea Hutwagner, *STEM Education Manager*
Chris LeTourneau, *Programs Coordinator*
Meg Lombardi, *Marine Science Educator*
Fernanda Ataides Poncioni, *Marine Science Educator*

Briana Pucci, *STEM Education Specialist*
Jill Zerkowski, *Community Engagement Coordinator*

EVENTS

Tonya Pellegrini, *Director of Events*
Nicole Carbajal, *Events Coordinator/Research Technician*

FACILITIES

Andy Earl, *Facilities Manager*
Patrick Lewin, *Maintenance Technician*
Ed Lewis, *Maintenance Technician*
Anthony Romano, *Maintenance Technician*
Jacob Spedoske, *Maintenance Technician*

GUEST SERVICES

Michael Perry, *Guest Experience Manager*
Mare Guastini, *Guest Services Associate*
Mariana Oliveira Martinez, *Tortuga Cafe Sales Coordinator*
Scott Rosenstock, *Guest Services Associate*
Lisa Sgroi, *Guest Services Associate*

Valarie Spezza, *Guest Services Associate*
Ashley Ricketts, *Tortuga Cafe Sales Associate*
Casey Moore, *Tortuga Cafe Sales Associate*
Ariela Gomez Velez, *Tortuga Cafe Sales Associate*

HOSPITAL

Heather Barron, DVM, DABVP, CertAqV, *CSO & Head Veterinarian*
Sarah Buttrey, *Hospital Technician*
Amy Kowalski, CVT, *Hospital Manager*
Jamie Pescatore, *Hospital Technician/Student Coordinator*
Marika Weber, CVT, *Veterinary Technician/Animal Care Liaison*

JUNO BEACH PIER

Randy Yent, *Pier Manager*
Adam Benilous, *Pier Assistant Manager*
Matt Singer, *Senior Pier Attendant*
Fran Bristow, *Pier Attendant*
Christopher Dwyer, *Pier Attendant*
Sabrina Fischer, *Pier Attendant*
George Fletcher, *Pier Attendant*
Ed Miracco, *Pier Attendant*
Charles Martin, *Pier Attendant*
Dallas McCurley, *Pier Attendant*
Peggy Pettit, *Pier Attendant*

MARKETING

Audrey Padgett, *Vice President of Marketing and PR*
Tom Longo, *Senior Brand Manager*

RESEARCH

Justin Perrault, Ph.D., *Vice President of Research*
Katie Fowler, Ph.D., *Postdoctoral Scientist*
Sarah Hirsch, *Director of Research*
Shelby Hoover, *Senior Biologist*
Jennifer Reilly, *Research Operations Manager*

RETAIL

Kate Fratalia, *Vice President of Retail*
Lisa Beaudry, *Sales Associate*
Jamal Bryant, *Receiving Manager*
Pam Fortner, Sr., *Sales Associate*
Elisa Godfrey, *Sales Associate*
Reggie Gonzalez, *Sales Associate*
Keke Lee, *Sales Associate*
Jessi Louw, *Senior Retail Operations Manager*
Joe Morse, *Sales Associate*
Denise Rogers, *Sales Associate*
Stacey Sherwood, Sr., *Sales Associate*
Beverly Singer, *Merchandiser*
Joyce Soloman, *Sales Associate*
Julie Superti, *Sales Associate*
Suzanne Brubaker Weaver, *Sales Associate*
Olga Welch, *Sales Associate*

VOLUNTEER

Kay Tennison, *Volunteer Program Manager*

*Full-time and part-time staff at time of publication.

THANK YOU, LMC VOLUNTEERS

Loggerhead Marinelife Center is grateful for its **400+** active volunteers who have donated nearly **50,000** hours of their time, with a service value of **\$1,665,491**, to support our mission in 2024.

Kathy Ahearn	Jeanne Bolhuis	Jan Clark	Bill Denlinger	Viera Garcia
David Ahlgrim	Maria Bosack	Jean Claugus	Kyle Dennis	Gregory Gatcomb
Marisa Alter	Lisa Bowdish	Gail Clayton	Isabelle Desjardins	Sally Gates
Tom Amell	Pamela Brasch	Jane Clinton	Savannah Deutsch	Stella Georgedakis
Cynthia Anderson	Chloe Brashears	Kate Cockren	Michael Dill	Heather Gilbreath
Nancy Anderson	Tristan Brassington	Tom Cole	Kimberly Dishman	Lois Glazer
Maura Armstrong	Kate Bravo	Becky Collier	Joe Dowds	Gordon Goldhaber
Anita Bailey	Lynn Brennan	Ryan Collins	Tammy Drury	Holly Goller
Meghan Baker	Mary Brockhaus	Ayden Colter	Andrew Duda	Jill Goodman
Sandy Baker	Alison Brower	Cathi Comer	Sherry Eckstein	Faith Gordon
Elizabeth Ballard	Vicki Brown	Lori Conti	Nancy Edwards	Maren Grammer
Terry Banasiak	Laura Bruce	Gregg Cook	Shirley Edwards	Erica Gray
Hayden Baratte	Vickie Brunner	Hilary Cooklin	Julia Effenberger	Bernard Gregory
Melissa Barker	Suzanne Buenaventura	Debra Cooney	Christina Eliades	Grace Grimm
Travis Baron	Isabella Bueno	Elisabeth Coppola	Jacqueline Emanuel	Mallary Groff
Karen Bartnick	Mike Buente	Sofia Corces	Karen Emery	Ellen Grosser
Benjamin Bartram	Carter Burden	Madeline Corella	Jacalyn Fallman	Rosalyn Grossman
Barbara Baute	Lewis Cabibi	Howard Cosgrove	Raymond Faloona	Mitchell Group
Robert Baute	Laura Cahill	Tina Cox	Gabriella Farinas	Bonnie Hammer
Jill Beck	Olivia Caiazzo	Robin Craig	Barbara Fawcett	Elissa Hardy-Schafer
Diane Bedford	Angela Calicchio	Rebecca Crawford	Melissa Fishman	Gracie Harris
Melanie Bell	Gianni Camerieri	Hannah Creamer	Kathleen Fitzgerald	Noah Harris
Paul Bell	Marvella Campbell	Dan Cross	Jasmine Fontaina	Katie (Catherine) Harrison
Douglas Benilous	Charlene Carlin	Donald Cruz	Kylie Fornell	Kelly Hartzog
Jill Bennardo	Katherine Carlin	Jennifer Cruz	Esther Forrest	Anna Heitzenrater
Avery Berschel	Adelina Cavanagh	Emily Cummings	Donna Fox	Elaine Hensz
Holly Best	Phoebe Chaves	Elizabeth Cupp	Samantha Fuller	Lincoln Herter
Susan Biederman	Lauralyn Chrisley	Madison DeGennaro	Gabriella Funderlich	Nicola Hester
Vicki Biggers	Kelie Cichoski	Paige Dehart	Mae Fydenkevez	Catherine Hicks
William Bishop	Alison Clark	Ilene DeJong	David Galligan	Stefan Hitchon
Germaine Block	Ethan Clark	Alison DelVecchio	Tenessa Gambrell	Tijana Hitchon
Lois Bol	Harold Clark	Irene Demetriou	Erin Ganter	Beryl Holland

Mark Holland
Bryan Horveath
Nancy Hoskins
Sharon Howell
Judy Hutira
Sebastian Impellizeri
Jamie Irwin
Chris Isaula
Jean Jacques
Wayne Jacques
Manuela Jaramillo
Kristin Jenkins
Denise Johnson
Paula Johnson
Taylor Johnson
Lily Josephson
Tyler Jurain
Natalie Kalasky
Stephen Kavanewsky
Leila Kazimir
Holly Kelly
Susan Kevin
mary king
Lisa Klatsky
Nina Klimek
Karel Klos
Nancy Kollner
Karen Kolstad
Nancy Kotzen
Joyce Laitman
Madison Lambert
Dorie Lamourt
Karen Landers
Leanna Landsmann
Olivia Lang-Brown
Jordan Lange
Lorrie Larew
Patricia Larocca
Josie Leali

Alyse Lemstrom
Robert Leonard
Robert Lesko
Terry Lesko
Elizabeth Lillo
maureen lloyd
Jahari Lockett
Natalie Longo
Sophia Longo
Joy Loper
Blake Lugosi
Brandi Lyew-Fong
Karen Mackin
Crystal Main
Danielle Majkut
Bob Male
Angelique Malfregeot
Donna Manderino
selina mann
Brooke Marchesani
Cristian Marginean
Alexander Marks
Gavin Marroney
Antoinette Martin
Natalie Martin
Alyssa Martinez
Marisa Marulli
Laura Matera
Angelina Matusof
Gloria Mazza
Deanna McCaffery
Lisa McCoog
Joan Mcintyre
Stephen McKenna
Jadah McMillan
Heather Meegan
Anna Melnychuk
Ceil Mena
Eric Menkin

Lois Menkin
David Mick
Kristin Miller
Margaret Miller
Michelle Miller
Mae Mincer
Cecilia Minnerly
Marilyn Missett
Ellie Moore
Dee Dee More
Deborah Moreland
Ava Morgan
Bria Morganroth
Jessica Morgenthal
Alison Morris
Avery Morris
Marian Morse
Ed Mullen
Jillian Murphy
Patricia Murphy
Ann Nalepa
Deborah Neely
Kathy Nelson
Lainey Nelson
Andrew Newberg
Stephanie Newberg
Larry Nicholson
Katy Nierman
Susan North
Emily Nuneville
Claudette Nys
Brian O'Sullivan
Julie Oakley
Richard H Oakley
Susan O'Connell
Sailyn Olivares
Gregg Olsen
Karen Opalka
Christina Ouderkirk

Mariel Ozaroff
Gabriella Palestrant
Kathleen Panko
Dean Paraskeva
Marjorie Patella
Aolani Paula
Olivia Perrotta
Parker Petronella
Abbie Petrosky
Tamara Piloni-Keith
Scott Pittenger
Anna Plumley
Deborah Polites
Carole Poncy
Molly Powell
Mary Pratt
Alexander Profit
Michelle Puerta
Roger Raftery
Daniel Rakus
Deb Rasmussen
Geraldine Ratner
Irving Ratner
Sandra Rea
Beverly Reddington
Patrick Remy
Dianne Rescigno
Katherine Rich
Peter Richardson
Sherry Ring
Jennifer Ripley
Ryan Roach
Evan Roberts
Toni Robinson
Amberly Rodriguez
Gabriela Rodriguez
Presley Rodriguez
Rachel Rodriguez
Denise Rogers

Ashley Role
Katie Ropa
Alec Rosen
Carly Ross
Linda Ross
Michael Rossin
Vicki Rubin
Cheryl Russell
Pamela Russell
Joseph Ryan
Peggy Rydberg
Nicholas Sama
Madelynn Sampson
Deven Sanchez
Mariana Santiago
Theresa Saunders
Reyansh Sawant
Cannon Schider-Heisel
Lyle Schultze
Stephen Schwartz
Denise Schweizer
Frank Seitz
Lisa Seitz
Malvina Senzon
Emily Sgroi
Mia Shaffer
Olivia Shand
Sarah Shaw
Bijjan Shirvani
Caroline Skae
Chelsea Smasal
Mindy Smerhoff
Betsy Smith
Marion Smith
Robert Smith
Sabrina Spears
Zoe Stackman
Gary Stanyer

Continued on next page.

VOLUNTEERS

Continued from previous page.

Carl Stearns
Heather Steele
Joshua Sterious
Carolina Stovall
Marlene Stover
Madison Suddaby
Marion Suro
Howard Sydney
Elliot Taddia
Joseph Tarajos
Tammy Tauscher
Thomas Teater
Lynda Thomas
Reese Thomas
Susan Thomson
David Thorpe
Kathleen Toyé
Erin Trammell
Renee Trett
James Trice
Cheryl Tuccito
Rebecca Tudor
John Tyson
Joseph Urban
Sandra Urban
Allison Van Sickle
John Vogel

Scott Vogel
Ann Marie Vrabel
Kathleen Vrona
Michael Wade
Jim Ward
Pamela Ward
Jill Watson
Stephen Weaver
Alexis Welch
Lynne Wells
Peter Wells
Chelsea Westra
Ellen Whitehill
Orson Whitfield
Elliott Wildman
Teresa Wilkinson
Hope Wilkos
Shannon Williams
Elizabeth Willson
Anne Wilson
Mary Wilson
Kacye Winslow
Robin Wyand
Yulia Yasskiy
Julie Yodice
Samantha Yost

2024 VOLUNTEERS OF THE YEAR BY DEPARTMENT

Animal Care: Kristen Miller

Conservation: Mitch Group

Development: Kathie Toyé

Education: Mary Wilson

Events: Mary Pratt

Exhibit: Travis Barron

Gift Store: Leila Kazimir

Guest Services: Stephen Weaver

Hospital Interpreter:

Jeanne Bolhuis

Husbandry: Laura Bruce

Pier: Mitch Group

Program Assistant:

Melissa Baker

Research: William Bishop

49,731

**TOTAL VOLUNTEER HOURS
FOR 2024**

119

**NEW VOLUNTEERS
IN 2024**

ACTIVE VOLUNTEERS WITH 10+ YEARS OF SERVICE

Nancy Anderson

Barbara Baute

Melanie Bell

Laura Bruce

Marvella Campbell

Jean Claugus

Gail Clayton

Donna Fox

Paula Johnson

Ceil Mena

Carole Poncy

Geraldine Ratner

Irving Ratner

Beverly Reddington

Stephen Schwartz

Betsy Smith

Carl Stearns

Howard Sydney

Joseph Urban

Sandra Urban

Michael Wade




LOGGERHEAD
MARINELIFE CENTER

RESEARCH
VOLUNTEER
FLORIDA

LOGGERHEAD
MARINELIFE CENTER



RESEARCH

Marissa Marulli

THANK YOU, GORDON GRAY CIRCLE

This list reflects our 2024 Gordon Gray Circle donors who give \$5,000 or more to support our work. If you should see an unintentional error, please call or email Development at 561-627-8280, ext. 133 or development@marinelife.org.

A.P. Kirby, Jr. Foundation Inc.
Admirals Cove Foundation Inc.
Albert E. & Birdie W. Einstein Fund
Amazon
AMG Charitable Foundation
Anderson-Rogers Foundation Inc.
Ann A. Mergens Foundation
Anonymous
Archie Carr Center for Sea Turtle Research
at the University of Florida
Ingrid Arneberg
Anita and David Bailey
Joan Bancroft Grody
Bank of America Charitable Foundation
Sherry and Tom Barrat
Darren Bardell
Karen Bell Mackie and Stephan Mackie
Noelle and Brett Bivens
BOV Foundation
Monique Brechter and Steven Heinemann
Bruce Foundation
Bruce G. Geary Foundation
Fran Buckley
Susan Burke
Capital City Consulting
Carrier
Cemex
Bitasta (Vitti) Chaturvedi, in memoriam Ravi Chaturvedi
Lori Civeillo
Cognizant Classic in The Palm Beaches
Kevin Copeland
Cox Foundation

CRC Insurance Services
Cultural Council for Palm Beach County
Curtis and Edith Munson Foundation
DaRin Butz Foundation
Dennis & Smith Foundation
Donald C. McGraw Foundation
Loren and Thomas Donino
Steven Douglas
Allison Dray
Duke Energy Florida, LLC
Eliasberg Family Foundation
Equity LifeStyle Properties, Inc.
April and Frederick Feldman
Fleming Family Foundation
Florida Power & Light Company
Florida Sea Turtle License Plate Grants Program
Maryfran Foulks
Frenchman's Creek Charities Foundation, Inc.
Mark Furness
Amy Gainfort Katz
Barbara and Henry Garrana
Paul and Eva Giffune
Glenn W. and Cornelia T. Bailey Foundations
Golden Age Auctions LLC
Goldring Family Foundation
Camille and Scott Goodby
Google.org Fund
Gratis Foundation
Diane, Doug, and Donald Gray
Raymond E. Graziotto
Anthony Greco
Hair Ventures, LLC

Maureen and Thomas Hartzog
Elizabeth Hartzog
Gerald and Agnes Hassell
Linda and Bill Haugland
Mark Healey
George and Lisa Hines
Jennifer and James Hines
Tijana and Jonathan Hitchon
Anita Hochstein
Lauraine Hoensheid
Ibis Charities Foundation
Marisa Ignacio Hormel
Inspirational Futures Foundation
Elsa B. Jacobs
Jim and Diane Perrella Foundation
JM Family Automotive LLC
John A. and Elizabeth F. Taylor Charitable Foundation, Inc.
Sarah Johnson
Gayle and Michael Johnston
JPMOH Foundation
Denise Kalland
Karl F. and Teryn B Weintz Foundation
KCK Foundation
Kefalas-Pinto Foundation
Keith & Corinne Bentley Family Foundation
Kellar Family Foundation
Sharon Kewley
Key Private Bank
King Tree Service of South Florida
Knopf Family Foundation
KoaKoa
Thomas Kodadek and Ofelia Utset

Jeffrey and Colleen Kohler
Karl Korzenewski and Barbie Billens
Devin Krauss
Kukla Family Foundation
Denise and Matthew Kuntz
Margaret Sanger Lampe and Robert Inman
Leanna Landsmann and Chip Block
The Klorfine Foundation
Julie and Bartley Livolsi
Maureen J. Lloyd
Kim and Edwin Lunsford / Krumholtz Family Foundation
James Dunning and Susan Magrino
Jenny and Robert Male
Maloy Family Fund
Kathleen and Chris Mara
Karen and Dennis Marcus
Marine Industries Association of Palm Beach County, Inc.
Fred Marshall
Marshall and Jamee Field Family Fund
Karen Meyer
Meg Miller
Morgan Family Foundation
James Mullen
Lura Myers
Barbara Nicolo
Northern Trust
Olivia Orr
Jenny and Lee Owen
Pacsafe-Outpac Designs Inc.
Kathy and Michael Paleczny
Sue and Mark Panella
Barbara Patel
Joanne Patton
Rosalinda Perron
PHYTO - Paris
Pike Electric
PNC Bank
Pratt & Whitney
David Ramba

Jill and Alan Rappaport
Amar Raval
Dr. James and Bonnie Reiffel
Cindy and Mark Reinhardt
Krista and Michael Riehl
Rock The Ocean Foundation, Inc.
Joan and Ignacio Rodriguez
Barbara, Chris and Alec Rogers
Rubin, Turnbull & Associates
Crista and Allan Ryan
Sambol Family Foundation
Sharkey Family Foundation
Dr. Mary Jane Saunders and Dr. George Newkome
Scherzer Family Fund
Tami and Bill Shull
Southern Oak Insurance Company
Erin and Beau Standish
Christie Stone
Gary and Ella Swearingen
Nancy and Mark Taylor
TBC Corporation
The Clark Family Foundation
The Community Foundation for Palm Beach
and Martin Counties
The Henry Foundation, Inc.
The Liberty NeAd Fund
The Loxahatchee Club Educational Foundation
The Schweizer Family Fund
The Scott M Panzer Foundation
Donna and Drew Thompson
Graham Thorsteinson
Town of Juno Beach
Kathleen Toye
Triad Foundation
Meredith B. Trim and James L. Robo
Kirstin and Telby Turner
Turtle & Hughes
U.S. Sugar
Uniform Advantage

United Bank
Mimi and Jeff Vaughan/WLS Vitamins
John Ver Bockel and Kitty Carbonara
Nancy and Michael Vespoli
Carol and John Vispo
W. Bradford Ingalls Foundation
Lucy R. Waletzky and Jim Hamilton
Wallach Family Fund
Walmart Stores Inc.
Alice and Brian Waxman
Sally Ann Weger and Donna Mackay
Lynne and Peter Wells
Bob and Tona White
Windfall Fund
WM (Waste Management)
Meg and Sam Woodside
Yvadne Henrickson Estate
Scott Zelekowitz
Zidek Family Foundation



THANK YOU, GENEROUS DONORS

This list reflects our 2024 annual donors who give \$1,000 or more to support our work. If you should see an unintentional error, please call or email Development at 561-627-8280, ext. 133 or development@marinelife.org.

\$50,000+

Admirals Cove Foundation Inc.
Monique Brechter and Steven Heinemann
Bruce Foundation
Cultural Council for Palm Beach County
Dennis and Smith Foundation
Equity LifeStyle Properties, Inc.
Fleming Family Foundation
Florida Power and Light Company
Florida Sea Turtle License Plate Grants Program
Linda and Bill Haugland
JPMOH Foundation
Kukla Family Foundation
The Klorfine Foundation
Pike Electric
Scherzer Family Fund
TBC Corporation
The Liberty NeAd Fund
W. Bradford Ingalls Foundation
Yvadne Henrickson Estate

\$25,000-\$49,999

Anonymous
Bruce G. Geary Foundation
DaRin Butz Foundation
Donald C. McGraw Foundation
Allison Dray
Paul and Eva Giffune
Goldring Family Foundation
Google.org Fund
Maureen & Thomas Hartzog

John A. and Elizabeth F. Taylor Charitable Foundation, Inc.
KCK Foundation
Kellar Family Foundation
Knopf Family Foundation
Karl Korzenewski & Barbie Billens
Denise & Matthew Kuntz
Jenny & Robert Male
Marine Industries Association of Palm Beach County, Inc.
Pacsafe-Outpac Designs Inc.
Barbara Patel
Pratt & Whitney
Amar Raval
Rubin, Turnbull & Associates
Southern Oak Insurance Company
The Henry Foundation, Inc.
The Schweizer Family Fund
Zidek Family Foundation

\$10,000-\$24,999

A.P. Kirby, Jr. Foundation Inc.
AMG Charitable Foundation
Ann A. Mergens Foundation
Archie Carr Center for Sea Turtle Research at the University of Florida
Ingrid Arneberg
Anita and David Bailey
Bank of America Charitable Foundation
Darren Bardell
Karen Bell Mackie and Stephan Mackie
BOV Foundation

Susan Burke
Capital City Consulting
Carrier
Bitasta (Vitti) Chaturvedi, in memoriam Ravi Chaturvedi
Cognizant Classic in The Palm Beaches
Kevin Copeland
CRC Insurance Services
Curtis & Edith Munson Foundation
Loren and Thomas Donino
Steven Douglas
Duke Energy Florida, LLC
Eliasberg Family Foundation
April and Frederick Feldman
Frenchman's Creek Charities Foundation, Inc.
Amy Gainfort Katz
Raymond Graziotto
Hair Ventures, LLC
Gerald and Agnes Hassell
Tijana and Jonathan Hitchon
Anita Hochstein
Ibis Charities Foundation
Inspirational Futures Foundation
Elsa B. Jacobs
Sarah Johnson
Denise Kalland
Karl F. and Teryn B Weintz Foundation
Kefalas-Pinto Foundation
Key Private Bank
King Tree Service of South Florida
KoaKoa
Meg Miller
Lura Myers



Deano Cook

Northern Trust
Kathy and Michael Paleczny
PNC Bank
Jill and Alan Rappaport
Rock The Ocean Foundation, Inc.
Barbara Rogers
Crista and Allan Ryan
Sambol Family Foundation
Dr. Mary Jane Saunders and Dr. George Newkome
Sharkey Family Foundation
Tami and Bill Shull
Erin and Beau Standish
The Community Foundation for Palm Beach
and Martin Counties
The Scott M Panzer Foundation
Donna and Drew Thompson
Graham Thorsteinson
Kathleen Toye
Triad Foundation
Turtle & Hughes
U.S. Sugar
United Bank
Mimi and Jeff Vaughan/WLS Vitamins
Lucy R. Waletzky and Jim Hamilton
Walmart Stores Inc.
Lynne and Peter Wells
Windfall Fund
WM (Waste Management)

\$5,000-\$9,999

Albert E. & Birdie W. Einstein Fund
Anderson-Rogers Foundation Inc.
Joan Bancroft Grody
Anonymous
Noelle and Brett Bivens
Fran Buckley
Cemex
Lori Civeillo
Cox Foundation

Maryfran Foulks
Mark Furness
Barbara and Henry Garrana
Golden Age Auctions LLC
Camille and Scott Goodby
Gratis Foundation
Diane, Doug and Donald Gray
Elizabeth Hartzog
George and Lisa Hines
Jennifer and James Hines
Lauraine Hoensheid
Marisa Ignacio Hormel
Jim and Diane Perrella Foundation
JM Family Automotive LLC
Gayle and Michael Johnston
Keith & Corinne Bentley Family Foundation
Sharon Kewley
Thomas Kodadek and Ofelia Utset
Jeffrey and Colleen Kohler
Devin Krauss
Margaret Sanger Lampe and Robert Inman
Leanna Landsmann and Chip Block
Julie and Bartley Livolsi
Maureen J. Lloyd
Susan Magrino and James Dunning
Maloy Family Fund
Kathleen and Chris Mara
Karen and Dennis Marcus
Fred Marshall
Marshall & Jamee Field Family Fund
Karen Meyer
Morgan Family Foundation
James Mullen
Barbara Nicolo
Olivia Orr
Jenny and Lee Owen
Sue and Mark Panella
Rosalinda Perron
PHYTO - Paris

David Ramba
Dr. James and Bonnie Reiffel
Cindy and Mark Reinhardt
Krista and Michael Riehl
Joan and Ignacio Rodriguez
Christie Stone
Gary and Ella Swearingen
Nancy and Mark Taylor
The Clark Family Foundation
The Loxahatchee Club Educational Foundation
Town of Juno Beach
Meredith B. Trim and James L. Robo
Kirstin and Telby Turner
Uniform Advantage
John Ver Bockel and Kitty Carbonara
Nancy and Michael Vespoli
Carol and John Vispo
Wallach Family Fund
Alice and Brian Waxman
Sally Ann Weger and Donna Mackay
Bob and Tona White
Meg and Sam Woodside
Scott Zelekowitz

\$1,000-\$4,999

Lorraine Alkire
Allison Baske Wiese Family Foundation
Larry Anderson
Anonymous
Shuhra and Michael Anspach / Jane Friedman Anspach
Family Foundation Inc.
Association of Reptilian and Amphibian Veterinarians
Shirley Avakian
Avalon Bay
Robert Awe
Nicole Barylski
Blair and Kenneth Beall
bestbet Jacksonville
Kristin and Michael Blackmon

Continued on next page.



DONORS

Continued from previous page.

Carol Blaney and John Sun
Kevin Bott
Jason Brauth
Laurena Leon and Bruce Briggs
David BuShea
Carol Anne Halperin Minkin Family Foundation
Christine and Larry Carsman
Charming Shark Tropical Accessories, Inc.
Emily Chichetti
Jennifer Christiansen
Classic Harvest
Jean Claugus and Michael Wade
Camille Coley
Timothy and Amie Connelly
Corporate Creations Foundation
Cypress Bay High School
Ursula and Francis Darling
Lorraine and Peter Del Col
Frank DeMaria
Pauline and Walter Dodge
DSS, Inc.
John Duvnjak
Nancy H Edwards
Martha Ehrenfeld and Carla McKay
Lori and James Ehret
John and Pamela Evans
F.A.O. Schwarz Family Foundation
Jennifer Farris
First Presbyterian Church - North Palm Beach
Fisheries Conservation Trust
Florida Turbine Technologies
Amy Fox
Gale and Harold Fravel
Freedom Boat Club

Friends of Green Cay Nature Center, Inc.
Robert and Kim Frisbie
Lex Gamble
Helene Getz
Joseph Gibbons and Ava Parker
Gilbane Building Company
Terri and Mike Gilroy
Ed Grilli
Monique Groenhuysen
Tresa Hall
Virginia Hartzog
Tom and Jan Hassfurther
Jody and Scott Haugland
Monica Head
Mark Healey
Robert and Barbara Henninger
Mark Herrmann
Mark Heshner
Patricia and Malcolm Hickok
Mary Ann and Gregory Hoeck
Mack Hollins
Donna Hudson
Vicky and Sam Hunt
Lyn Ianuzzi
Janis & Alan Menken Charity Fund
Ed Jeffery
John Craig Clothier
Susan Johnson
Jones Foster P.A.
Jupiter Beach Resort & Spa
Anna Kazanchyan
John Kenning
Kenelm Foundation
Katherine and Sean Kerr
Micheal Khamis
Larry Kimble
Kiwanis Club of North Palm Beach
Michelle Knevelbaard
Krumholtz Family Foundation

Peter Kulin
Dianne and Robert Lamina
Toni Landry
Denise LeClair-Robbins
Levels
Bobbie Lindsay and Douglas Buck
Louis A. and Dr. Donna M Manderino
Maria G. Marino Campaign 2024
Jay Martin
Jody and Raymond Mason
Mathews and Whiteley Charitable Fund
Matt Cahill Golf
Denise and Richard Mazzucco
John Medway
Paul Meloan
James Meunier
John Moecher
Jessica and Larry Morgenthal
Tina Morris
Bill Morton
Todd Murphy
Nivin and Duncan MacMillan Foundation
Biff O'Reilly
Ocean Tec
Bonnie and Conrad Olie
Patrick and Jane O'Neill
Oxford Industries
Palmdale Oil Company, LLC
Dorothy Pepper and David Normoyle
Petroleum Ventures Corp.
Steven Pizer
Susan Plaine
Frederick and Mary Lynn Putney
Eric Raisman
Robert Ramin
Katharine Rayner
Beverly and Rick Reddington
David Redmon
Reynolds Family Foundation

Richard W. and Susan M. Palmer Charitable Fund
Robert Riley and Teresa Barnwell-Riley
Wayne Risius
Paul Robbins and Laura Niedernhofer
Hedy Rossmessl
Elizabeth Rothermel
Vicki Rubin
Kenelm Foundation
Dean Saunders
Scott Family Foundation
Deborah Searcy
Sigety Marcus Fund
Rob Smith
Jan Speer Fox
Jonathan and Megan Spiro
SS Buyers Charitable Fund
Rebecca Steiner
Mary Beth Stoddard and Ken Nelson
Barbara Stoia Meister and Robert Meister
Suzanne & Frank Millard Fund
Ronald and Danielle Tadross
Melanie and Sean Tafaro
Pacific Life
The Aspen Grove Foundation
The Folke H. Peterson Charitable Foundation
The Hamilton Foundation
The Pappas Gift Giving Fund
The Sanborn Family Foundation
The Walt Disney Company Foundation
Thomas and Nephela Domencich Foundation
Catherine Tormey and Gregory Lyden
Beth and Tim Traff
Diana and Ken Trout
Melida and Michael Trzeciak
Dr. Ling Tung and Mr. Avi Ratica
Lewis and Elizabeth Turner
Kirstin and Telby Turner / RBC Wealth Management
Paul Vahldiek
Vedant Patel Foundation, Inc.

Bruce and Barbara Whitely
Whole Foods Market Community Giving Program
Amy Wilkinson
Wolff Family Charitable Trust
Jeanette Wyneken and Michael Salmon
Nancy Yarbrough
Andrea Youndt

In-kind \$1,000+

Anita and David Bailey
Matt Benton
Casa de Campo
Frenchman's Reserve Country Club
Alyse Lemstrom and Orson Whitfield

Julie and Bartley Livolsi
Zach Mather
Open Water Inc.
Sailfish Brewing Co.
Sandy James Fine Food Productions
Rosemary and Charles Schoenherr
Specialty Engineering Consultants
The Salty Blonde
Kelly and Richard Tracht
Vida Caña Rum



Marisa Marulli

PARTNERSHIPS AND COLLABORATIONS

To truly make a difference in ocean conservation and the protection of sea turtles, collaboration is key. While we often assist other organizations with data, trade knowledge, facilitate research, provide samples, and offer expertise, there are numerous like-minded organizations that do the same for us and we are proud to call them out as colleagues. Thank you for your partnership and collaboration. If you should see an unintentional error, please call or email Development at 561-627-8280, ext. 133 or development@marinelife.org.

4ocean

Archie Carr Center for Sea Turtle Research

Boys & Girls Club of Palm Beach County

Brevard Zoo

Busch Wildlife Sanctuary

City of Boca Raton

City of Juno Beach

Cox Science Center and Aquarium

Cultural Council for Palm Beach County

Discover The Palm Beaches

Disney's Animals, Science and Environment

El Sol Jupiter Community Resource Center

Florida Atlantic University

Florida Fish and Wildlife Conservation Commission

Florida Power & Light Company

Florida Youth Conservation Centers Network

Force Blue

Friends of Manatee Lagoon

Grupo Tortuguero

Gumbo Limbo Nature Center

Informa Markets (PBIBS)

Inwater Research Group

Jupiter Dive Center

Jupiter Inlet Colony

Jupiter Medical Center

Manatee Lagoon – an Eco-Discovery Center

Mote Marine Laboratory

National Save the Sea Turtle Foundation

Nelson Mandela University

New England Aquarium

NOAA

North-West University

Palm Beach Chamber of Commerce

Palm Beach County

Palm Beach County Environmental
Resources Management

Palm Beach County Parks & Recreation

Palm Beach North Chamber of Commerce

Palm Beach Zoo & Conservation Society

Phillip and Patricia Frost Museum of Science

Prime Time Palm Beach County

Resources in Science Education (RiSE) community

Sailfish Brewing Company

Sanibel-Captiva Conservation Foundation

Smithsonian Institution

Stiles-Nicholson STEM Teachers Academy

Texas A&M University

The Coastal Stewards

The Ocean Foundation

The School District of Palm Beach County

UF Center for Coastal Solutions

Universidad Autonoma de Baja California Sur

University of Central Florida

University of Florida

University of Florida Center for Coastal Solutions

University of Georgia

University of Massachusetts Amherst

University of Miami

University of Washington

Upwell

Vida Caña Rum





Marisa Marulli


LOGGERHEAD
MARINELIFE CENTER



Loggerhead Marinelifelife Center
14200 U.S. Highway One
Juno Beach, FL 33408

marinelife.org

