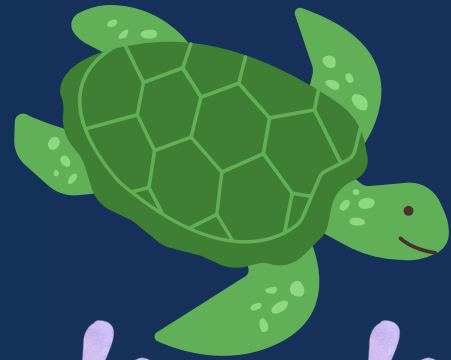
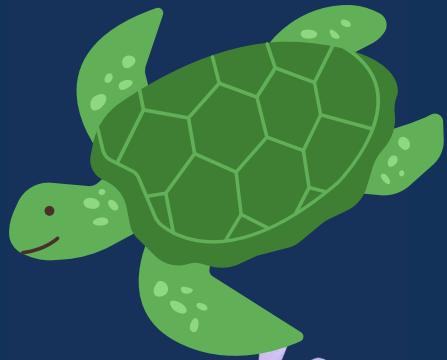


Social Narrative by Loggerhead Marinelifelife Center

Sensory Saturdays



Ready to plan your day at
Loggerhead Marinelife
Center?!

Here we go!

Today we will help plan your visit to
Loggerhead Marinelife Center

Some people refer to us as the
Marinelife Center or LMC for short!

We help sea turtles get back to the
ocean after not feeling well!

This is the Front Entrance to Loggerhead Marineline Center!



If you're parking in the front of our building, you will walk right through here!



If you arrive later in the day and park in the back or come in from the beach, you can walk around the sidewalk to get to our Front Entrance!



All Loggerhead Marineline Center Guests will be greeted by one of our volunteers and staff as you walk in!



Say Hello!

We're
excited to
have you
here today!

All Volunteers and Staff will be wearing Navy or White polo shirts.



They will be wearing a name badge with their name on it.

You may also be greeted by another friend,
Archelon!



*Hello down there!
Enjoy your time at
LMC!*

Don't worry,
this is just a
fossil of
what sea
turtles used
to look like
when the
dinosaurs
were
around!

Here at LMC, we're known as a non-profit, so you're free to walk around and enjoy the facility.

Thank you for being here today!

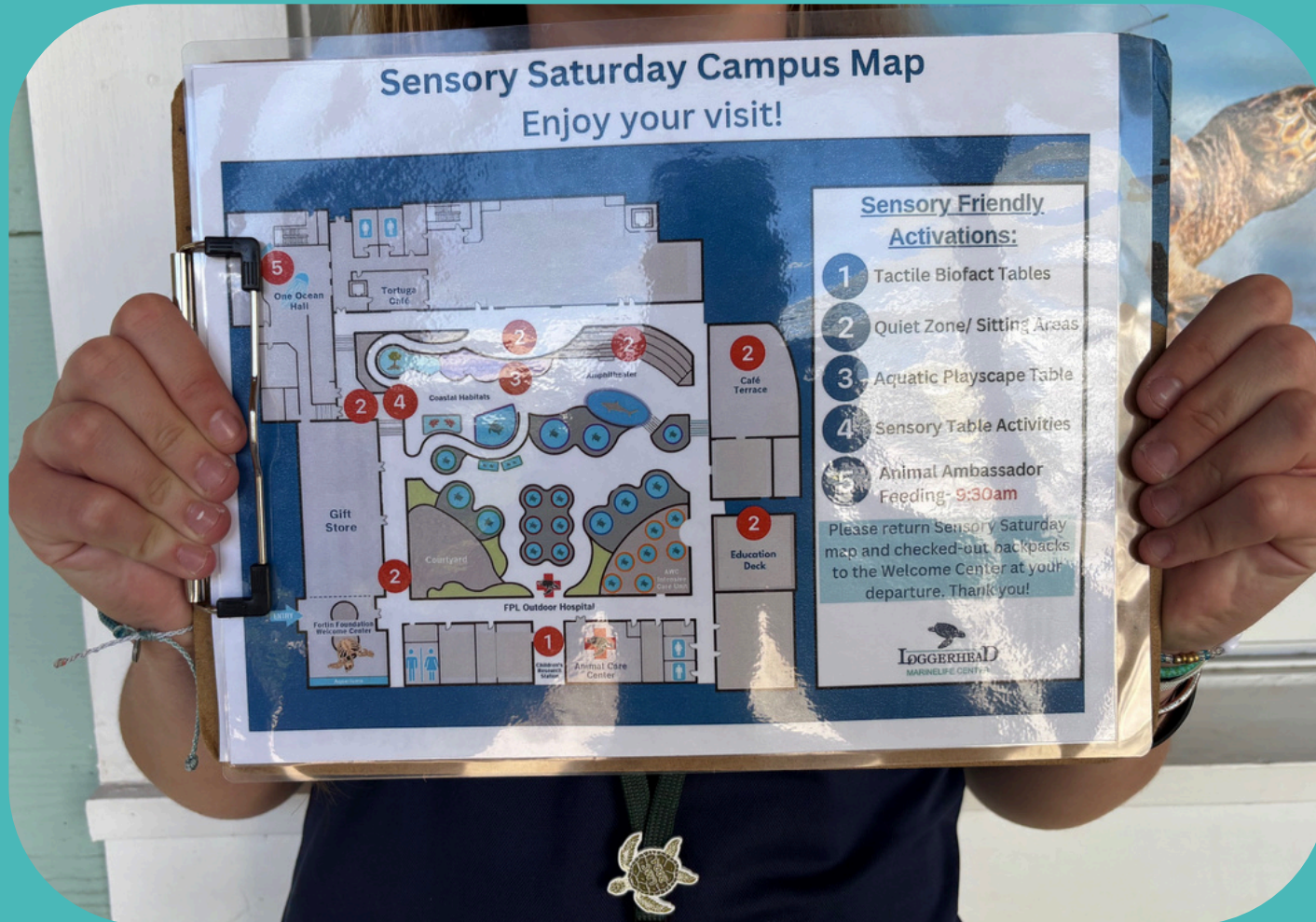
If your group is able to and would like to support our sea turtles, feel free to leave a donation to help take care of our patients.

Unless you're here for Sensory Saturdays,
there will probably be other guests at
Loggerhead Marinelife Center.



They're also excited to be here, so they may
be noisy!

During Sensory Saturdays, my group will receive a map of the Marinelife Center!



This map will help my group find all the different areas here at Loggerhead Marinelife Center.

We may have some fun activities
planned for our Sensory Saturday
Friends.

Come check out what we have on the
Ecosystem Terrace!

Activities to change each month!

There will be restrooms to use all around our campus! The Family Restrooms are located right near the Front Entrance where you came in!



When I walk around LMC, there will be many tanks filled with water that our sea turtles use to get better. The adults I'm with or the volunteers you see can help you learn about what happened to this sea turtle!



These sea turtles are not feeling well, they're here to get better and back out to the ocean!



When around our patients, please try to keep your voices down and stay off the fences!

We highly recommend you take a peek at our Indoor Hospital too! Although they're not feeling well, there are really nice doctors that are dedicated to making sure these sea turtles get back to the ocean!



If you're done viewing our patients, you can access other parts of LMC by walking up the small staircases or our ramps!



Other areas of the Marineline Center like to showcase the ecosystems our sea turtles like to visit when they're out in the ocean!



Don't forget to stop by the Children's Research Station, filled with lots of exciting biofacts for me to learn about and touch!



Throughout your day here at Loggerhead Marinelife Center, you may have the opportunity to join one of our Coastal Habitat Discovery Shows!



Occurs every day at 11:15am and 1:30pm!

Since Loggerhead Marinelife Center is primarily outdoors, we have inside exhibits in case you'd like a break from the heat! Find the doors that say One Ocean Hall!



Do be mindful!
It gets a little dark
in here and
there may be
some
bright lights in
some spots!

In the One Ocean Hall, there is a really cool Digital Reef that you can add your own fish to our Reef!



Add some color to your favorite fish and watch it swim by with all the others!

If you need a quiet space during your stay here, we suggest the Cafe Terrace which overlooks Juno Beach!



Pull up a chair and relax with the sounds and smells of the ocean!

There is a place to buy food and drinks at Loggerhead Marinelife Center, its called the Tortuga Cafe!



If it's open during your visit, grab a snack or beverage and relax by the Cafe Terrace!

We also have a Gift Store at Loggerhead
Marinelife Center filled with lots of fun ocean
related gifts and clothes!



It is located near our Entrance and is a great
place to stop before heading home!

When it is time to go, you will leave with your group the same way you came in!



Don't forget to wave goodbye to our volunteers! We look forward to seeing you again soon!